



## QUICK LINKS

[Table of Contents](#)

[Closures](#)

[Accessories](#)

[Technical Info](#)

[Part Number Index](#)

*Edition 13*

*UPDATED: March 29, 2016*



FIBER-TO-THE-PREMISES (FTTP) PRODUCTS  
**CLOSURES | ACCESSORIES**



## About Superior Essex

Superior Essex International LP is a global leader in the design, manufacture, and supply of communications and energy cable products for indoor and outdoor applications. We offer a broad communications portfolio including premises optical fiber and copper cables, Outside Plant (OSP) cables, Fiber-to-the-Premises (FTTP) closures and enclosures, Fire Alarm and Security (FAS) cables, and Wireless cables and accessories. With over eighty years serving the communications and energy markets, we have cultivated a solid reputation as the preferred supplier of high-performance cabling for major communications service providers, leading enterprises, universities, hospitals, military facilities and businesses that rely on our innovative solutions to meet the demands of their evolving networks.



### OUR COMMITMENTS TO TRANSPARENCY AND SUSTAINABILITY

Superior Essex is firmly committed to environmental responsibility and transparency, and we constantly strive to lead innovation and design toward sustainable product solutions.



We are the first wire and telecommunications cable manufacturer to conduct an independent full Life Cycle Assessment examining the environmental impact of our high performance copper and optical fiber data cabling products, including our raw materials, manufacturing, transportation, installation, and end of life practices.



We are also the first in our industry to contribute toward LEED certification by offering Environmental Product Declarations (EPD) and Health Product Declarations™ (HPD™) for our premises copper and optical fiber cable products. Additionally, we offer Multi-Attribute Certifications for our premises copper products, which provide transparency into our manufacturing processes and help government procurement agents meet their sustainability goals by simplifying the sustainable supplier selection process.



As the first and only sustainable and transparent cable manufacturer, we are the preferred choice for all enterprises relying on sustainable cabling solutions.

UL and the related logo are registered trademarks of UL LLC. Health Product Declaration, HPD and the related logo are trademarks of Health Product Declaration Collaborative. GreenCircle Certified logo is a registered trademark of GreenCircle Certified, LLC. USGBC and the related logo are registered trademarks of U.S. Green Building Council.



## OUR EXPERIENCE IN FTTP HARDWARE

Superior Essex, Inc. manufactures a portfolio of Fiber-to-the-Premises (FTTP) products, including a complete family of Fiber Dome and In-Line Splice Closures and the Fiber Distribution Hubs (FDH-288) with kits and accessories designed to meet the requirements of broadband service providers such as telephone companies and service providers of the enterprise markets. Overcome your procurement and operational challenges with FTTP products that are easy to order, easy to install, and easy to maintain.



## EXCEPTIONAL PRODUCT QUALITY

When examining the Superior Essex FTTP hardware products, the first thing you will notice is their exceptional design quality. The entire portfolio is engineered to exceed durability and ruggedness of competitor products, while also being backed by a standard 10-year warranty on every closure and cabinet product. Here are a few highlights:

- Guaranteed to meet 100% of GR-771-CORE industry requirements for closures and cabinets
- Tested to exceed twice the GR-771-CORE standard for impact, compression and vertical drop in extreme heat and cold-weather
- Standard 10-year product warranty on all closures and cabinet products
- Designed to accommodate Superior Essex fiber cable designs and other industry standard fiber cable products
- Easy entry and access to closures, with hinged splice trays for splicing convenience



## DESIGNED BY EXPERTS IN OSP INFRASTRUCTURE

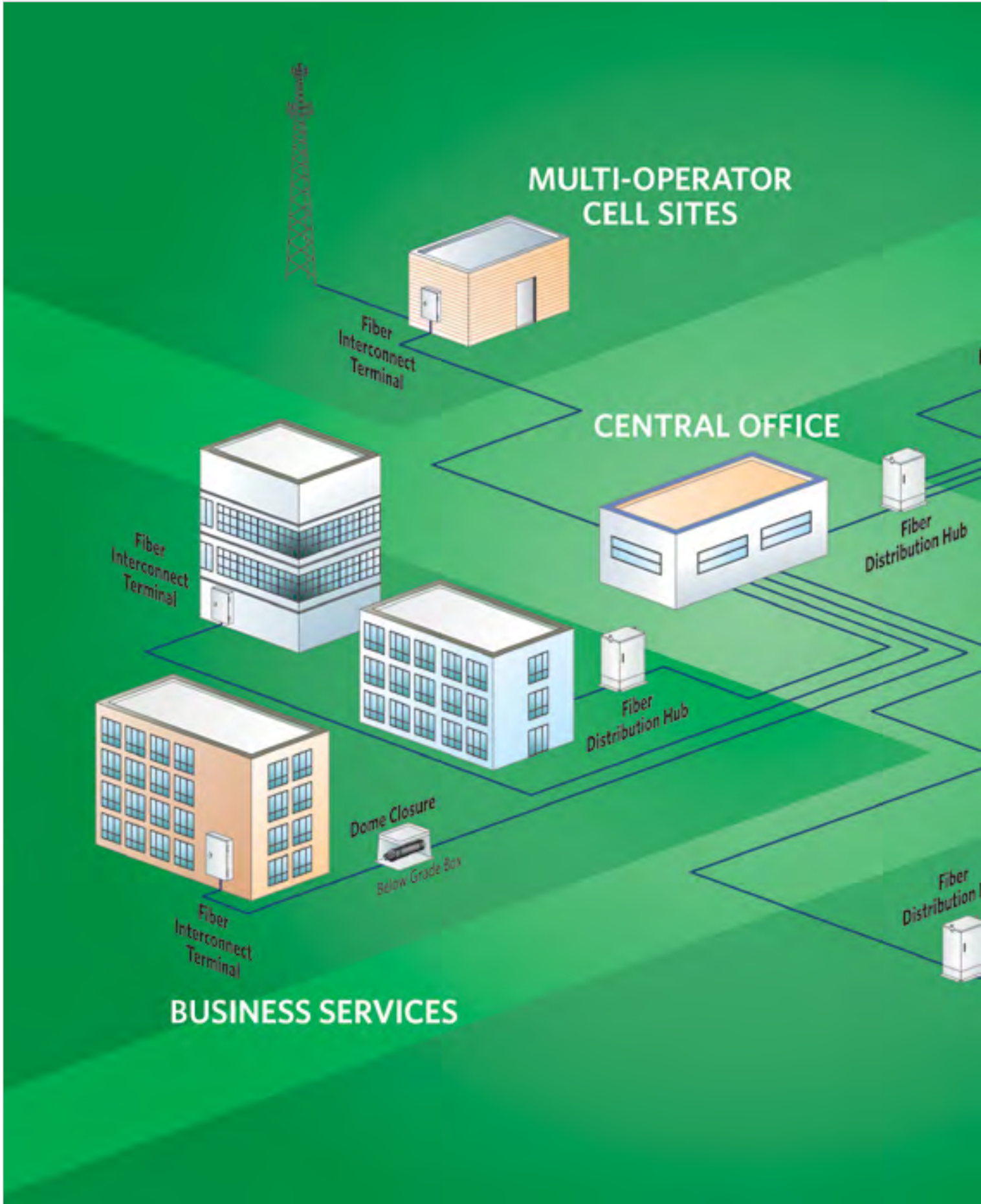
Our company is founded on the Outside Plant (OSP) infrastructure. This heritage translates into product designs that leverage our field experience in OSP product applications and fiber cable installations. Each FTTP product is made to provide outstanding performance in the real-world, with functionality that provides ease of use to expedite installations.



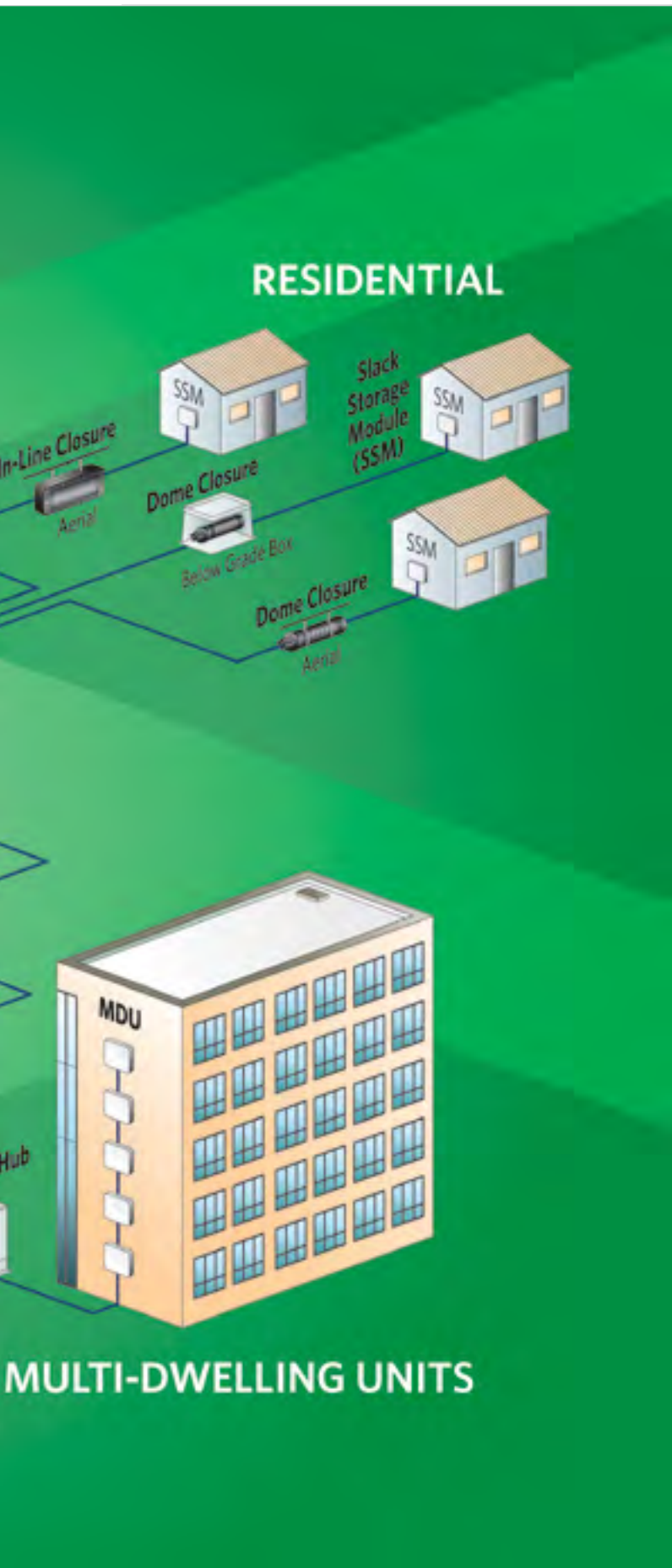
## TECHNICAL SUPPORT IS A TOP PRIORITY

Our technical support team is another key advantage of doing business with Superior Essex. We employ the best application engineers and support personnel in the industry to ensure that our customers have smooth installations and that all questions are resolved quickly. The old adage – time is money – is truer than ever; we are committed to providing excellent service, which is one of the many ways we have built our strong reputation.









## CLOSURES

Slack Storage Module (SSM) .....	C-2
Fiber In-Line Splice Closure (FIC) .....	C-4
Fiber Dome Splice Closure (FDC) .....	C-6
FDH-288 Series Fiber Distribution Hub (FDH) .....	C-8

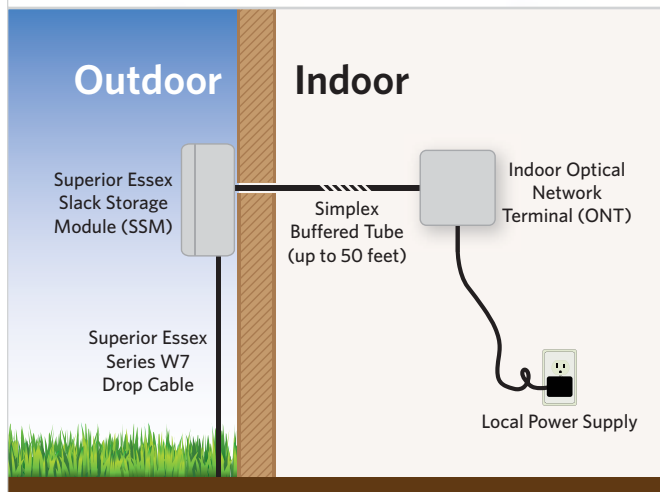
## ACCESSORIES

FIC Tray Kits/Splitters .....	C-10
FIC End Grommet Kits .....	C-11
FIC Hanger Kits .....	C-11
FDC Tray Kits/Splitters .....	C-12
FDC Pole Mount Kits .....	C-12
FDC Compression Grommet Kits .....	C-13
FDC Compression Connector Wrench .....	C-13

## TECHNICAL INFORMATION

Terms and Conditions of Sale .....	X-2
Part Number Index .....	X-3

# Slack Storage Module (SSM)



FTTP Tight Buffered Indoor/Outdoor Drop Series W7

## PRODUCT AND SOLUTION DESCRIPTION

The Slack Storage Module (SSM) provides water-tight storage for up to 50 feet of excess simplex fiber cable at the side of an FTTP residence. The SSM is specifically designed for use with the Superior Essex tight buffered indoor/outdoor drop cable to provide a substantial cost savings for FTTP installations – around \$200 per connected location.\*

The SSM provides protection of excess simplex fiber and convenient outdoor access to the fiber if a splice is necessary in the future.

The combination of the SSM and tight buffered drop cable enables the Optical Network Terminal (ONT) to be located inside the premises without the need for a termination or splice point on the exterior of the home. Our unique tight buffered drop cable is actually two cables in one: a rugged 300-pound rated OSP drop cable with an internal flexible OFNR rated simplex cable. By simply removing the outer PVC jacket and strength rods, this cable can be easily transitioned to indoor use without a splice point between the ONT and pedestal or terminal closure. For that reason, a splice point or termination is no longer required at the side of the home.

By locating the ONT inside the premises, the power supply can be plugged into any convenient wall outlet, eliminating the cost of running power to the ONT and the need to hire an electrician – further reducing installation costs. Another cost-savings benefit when using our tight buffered simplex cable design is having the capability to create a faster and more accurate termination to an SC connector.

*\*Savings are realized from elimination of electrician costs, reduced cost for indoor ONT, and reduced cost for fiber splicing.*

## APPLICATIONS

- Fiber to the Home or Premises applications with indoor ONT

## SYSTEM SOLUTION BENEFITS

- Only one technician is required for complete installation (no electrician required)
- Tight buffered optical fiber offers easier and faster termination than loose fiber termination or fusion splicing
- SSM provides an inexpensive way to access and store excess fiber
- Enables use of indoor-rated ONT that is less costly than outdoor-rated ONT
- Enables use of indoor backup power supply that is less costly than outdoor rated power supply

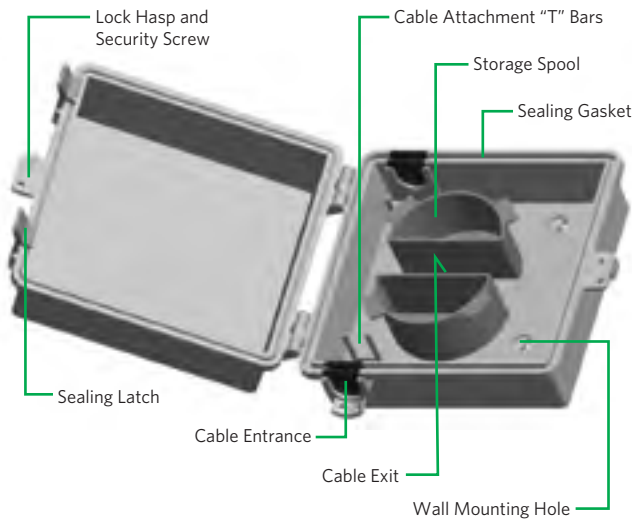
## MODULE FEATURES

- Compact, easy-to-install enclosure design
- Weather-resistance enclosure with two levered latches and sealing gasket on the cover
- Drop cable grommet ports at top and bottom of enclosure
- Storage spool for 50 feet of fiber drop slack storage
- Cable tie provisions for both cable sheath and buffer jacket

## MODULE BENEFITS

- Reduces initial cost of installation
- Provides superior environmental protection from rain, ice, dust and insects
- Provides flexibility and diversity in routing drop cable
- Provides optimum fiber management and generous slack storage
- Provides rigid and secure drop cable attachment

## Slack Storage Module (SSM)



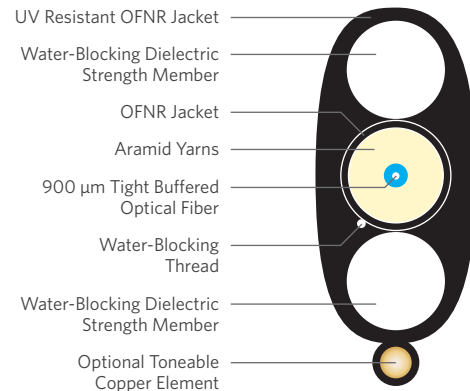
## MODULE SPECIFICATIONS

Dimensions in (mm)	Height: 6.7 (170) Width: 6.7 (170) Depth: 3.6 (92)
Weight lbs (kg)	0.5 (0.23)
Material	ABS plastic
Material Color	Light grey
Material Thickness in (mm)	0.10 (2.5)
Cable Entry	Two (2) in One (1) out
Maximum I/O Drop Cable Diameter in (mm)	0.18 x 0.40 (4.6 x 10.2)
Installation	Wall
Locking Mechanism	Two (2) levered cover latches and captive pin-in-hex security screw
Standards Compliance	Designed to meet NEMA 3 rating for environmental protection

## MODULE PART NUMBER

Part Number	Description
SSM-2C000	FTTP Slack Storage Module (SSM)

## FTTP Tight Buffered Indoor/Outdoor Drop Series W7



## CABLE SPECIFICATIONS

Simplex OFNR Nominal Diameter in (mm)	0.11 (2.9)
Simplex OFNR Bend Radius in (mm)	Install: 2.2 (56) Long Term: 1.1 (28)
Cable Bend Radius in (mm)	Install: 3.6 (91) Long Term: 1.8 (46)
Cable Tensile Load lbs (N)	Install: 300 (1,350) Long Term: 90 (405)
Maximum Span Length at 1% Sag ft (m)	Light Loading: 350 (101) Medium Loading: 275 (84) Heavy Loading: 150 (46)
Standards Compliance	Telcordia® GR-20-CORE RoHS-compliant

Telcordia is a registered trademark of Ericsson Inc.

## CABLE ENVIRONMENTAL SPECIFICATIONS

Operation/Storage	-40°C to +70°C
Installation	-10°C to +70°C

## CABLE MACRO BENDING PERFORMANCE

Turns on Radius Mandrel	ITU G 657 A	TeraFlex® SMF
10 Turns on 15 mm Radius Mandrel	Macro bending loss @ 1550 nm	0.25 dB Max. $\leq$ 0.20 dB
	Macro bending loss @ 1625 nm	1.00 dB Max. $\leq$ 0.50 dB
1 Turn on 10 mm Radius Mandrel	Macro bending loss @ 1550 nm	0.75 dB Max. $\leq$ 0.20 dB
	Macro bending loss @ 1625 nm	1.50 dB Max. $\leq$ 0.20 dB

TeraFlex is an ITU G 657 A optical fiber that is completely compatible with ITU G 652 D optical fibers. TeraFlex exceeds the performance standards of ITU G 657 A as listed above.

## CABLE PART NUMBERS AND PHYSICAL CHARACTERISTICS

Part Number	Description	Fiber Count	Nominal Dimensions in (mm)	Weight lbs/kft (kg/km)
W7001KU01	Universal	1	0.32 (8.2) x 0.17 (4.5)	29 (44)
W7002KU01	Universal	2	0.32 (8.2) x 0.17 (4.5)	29 (44)
W7001K101	Toneable	1	0.40 (10.2) x 0.17 (4.5)	31 (47)
W7002K101	Toneable	2	0.40 (10.2) x 0.17 (4.5)	31 (47)

# Fiber In-Line Splice Closure (FIC)



## PRODUCT DESCRIPTION

The Superior Essex Fiber In-Line Splice Closure (FIC) Series is made of a rugged, environmentally-resistant, molded plastic and grommet seal, which makes these optical fiber splice closures ideal for Outside Plant (OSP) below-grade and aerial applications.

The FIC Series is available in a single-bolt/latch, “clamshell” design, as well as a multi-bolt, two-piece design. The single-bolt/latch closure is specially designed for aerial applications with provisions for strand-mounting and hanger hardware included. This closure, when opened, allows the splice trays to fold open at a 90° angle, thus creating a convenient position for splicing. The multi-bolt, two piece closure is best suited for below-grade applications, with a circumferential bolt pattern to ensure a secure, water-proof seal and a flash valve for seal verification.

The FIC Series offers two sizes of closures to accommodate splice capacities up to 192 Loose Buffer Tube (LBT) and 432 Ribbon fiber counts. A variety of port grommets are included to support in-line, branch and multiple drop cable configurations. An SC/APC adapter panel option, for use of preconnectorized drops, is available for the Type B and Type C closure models. Additional grommets, hanger hardware and splice trays are available as Closure Accessory Kits.

The FIC Series is Telcordia® Technologies GR-771-CORE compliant and RUS Listed.

## APPLICATIONS

- The FIC Closure Series supports FT Tx deployments where aerial or below-grade, sealed optical fiber splicing is required for in-line, branch and multiple drop cable applications.

## FEATURES

- Compact design, easy to install and re-enter (Single-bolt/latch opens with ¼ inch hex Allen tool)
- Rugged, water-proof, UV-resistant closures design
- Variety of sealing grommet configurations
- For strand-mount installation, 90° hinged splice tray position for splicing
- Offered in multiple LBT fiber splice capacities
- Accommodates loose buffer tube, ribbon fiber types and splitter tray splice applications

## BENEFITS

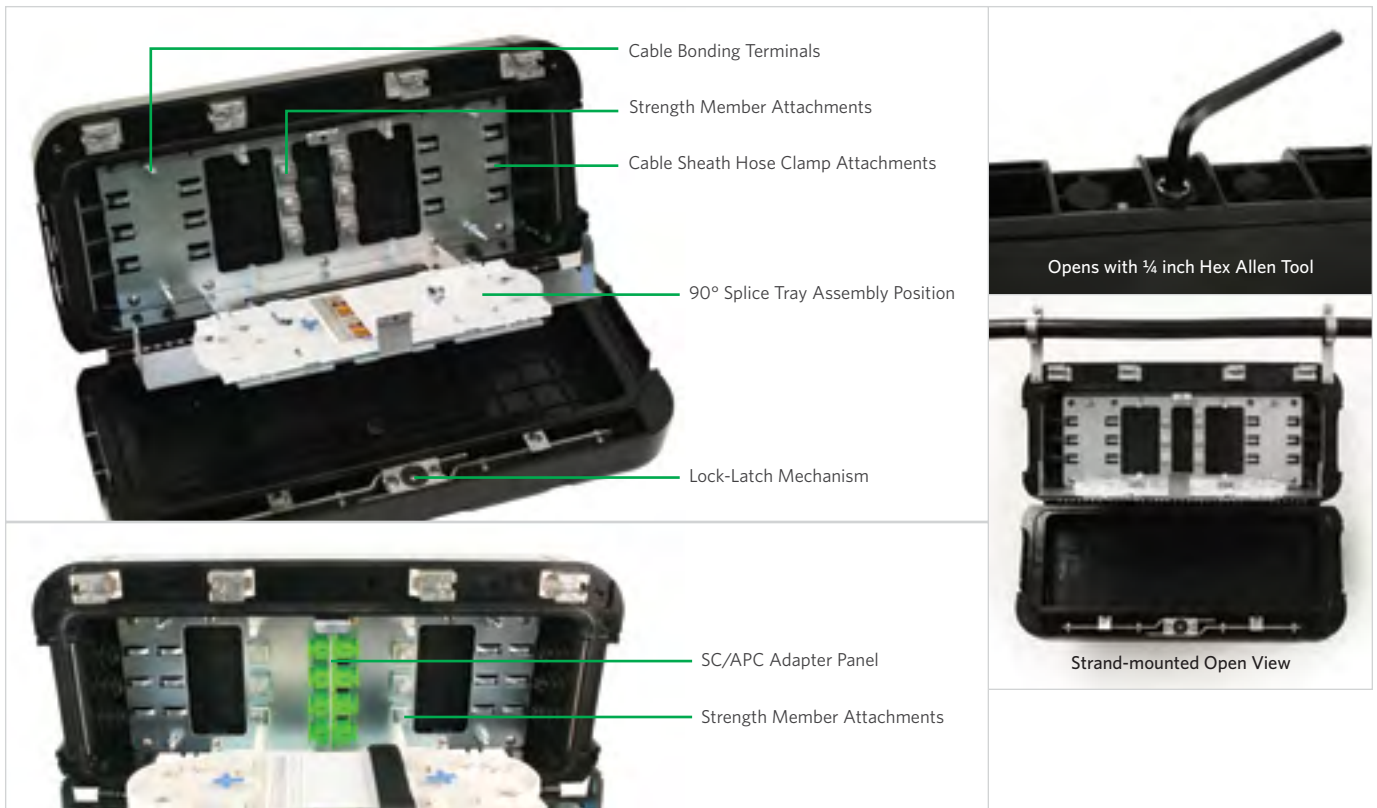
- Reduces installation and maintenance costs
- Provides superior environmental protection from water, dust, insect and rodent intrusion
- Provides flexibility by supporting a variety of cable types, sizes and routing configurations
- Allows easy access to splices and provides “work table” position for ease of splicing
- Easier selection to support the majority of fiber applications
- Provides optimum fiber cable selection flexibility, fiber management, generous slack provisioning and splitter mounting capability

## SPECIFICATIONS

Material	ABS/Polycarbonate
Cable Entry Ports FIC	Two (2) 3-port grommets (installed at each end) One (1) 2-port/multi-drop port grommet (included)
Cable Entry Ports F12	Two (2) 4-port flat drop grommets (one (1) installed at each end) Four (4) single feeder port grommets (two (2) installed at each end) Two (2) 4-port round drop grommets (provided in bag as spares)
Cable Diameter Range in (mm)	0.375 - 1.0 (8 - 26)
Installation/Application	FIC-AD: Below-grade or aerial FIC-BD/FIC-CD: Aerial
All Kits Include	<ul style="list-style-type: none"> <li>• One (1), 24-fiber splice tray (FIC-TD240)               <ul style="list-style-type: none"> <li>▪ 24 splice sleeves</li> <li>▪ Four (4) transport tubes</li> <li>▪ Eight (8) cable ties</li> </ul> </li> <li>• One (1) Velcro strap</li> <li>• Four (4) cable hose clamps</li> <li>• One (1) vacuum grease tube</li> <li>• One (1) multi-drop port grommet</li> <li>• One (1) silicone tape sheet</li> <li>• One (1) silicone sealant tube</li> <li>• Four (4) large cable ties</li> </ul>
FIC-BD100 and FIC-CD100 Kits Also Include	<ul style="list-style-type: none"> <li>• Two (2) aerial strand hangers</li> <li>• One (1) ¼ inch hex Allen tool</li> </ul>
Standards Compliance	Telcordia® Technologies GR-771-CORE, Issue 2 Rural Utilities Service (RUS) Listed

Telcordia is a registered trademark of Ericsson Inc.





**PART NUMBERS, CAPACITIES AND PHYSICAL CHARACTERISTICS**

Part Number	Height in (mm)	Width in (mm)	Depth in (mm)	Weight lbs (kg)	Sealing/Locking Method	Splice Tray Capacity		Maximum Fiber Splice Capacity		Buffer Tube Storage		SC/APC Adapter Capacity
						LBT	Ribbon	LBT (24 per tray)	Ribbon (144 per tray)	LBT (8 ft per tube)	Ribbons (8 ft per ribbon)	
FIC-AD100	6.69 (170)	16.93 (430)	4.33 (110)	6.61 (3.0)	Multi-Bolt/Two-piece	4	2	96	288	8	24	-
FIC-BD100	7.48 (190)	16.93 (430)	3.94 (100)	7.50 (3.4)	Single-Bolt/Latch	4	2	96	288	8	24	-
FIC-BD10A	7.48 (190)	16.93 (430)	3.94 (100)	7.50 (3.4)	Single-Bolt/Latch	4	2	96	288	8	24	8
FIC-CD100	7.48 (190)	16.93 (430)	5.32 (135)	9.26 (4.2)	Single-Bolt/Latch	8	3	192	432	16	36	-
FIC-CD10A	7.48 (190)	16.93 (430)	5.32 (135)	9.26 (4.2)	Single-Bolt/Latch	6	3	144	432	16	36	12
F12-BD100	7.52 (191)	20.35 (517)	4.53 (115)	7.94 (3.6)	Single Bolt/Latch	4	2	96	288	8	24	-
F12-CD100	7.52 (191)	20.35 (517)	5.67 (144)	8.60 (3.9)	Single Bolt/Latch	8	3	192	432	16	36	-

**ACCESSORIES\***

Part Number	Description	Kit Components
FIC-TD120	Splice Tray Kit - 12 LBT or 144 Ribbon	Splice tray, 12 splice sleeves, 4 transport tubes, 8 cable ties
FIC-TD240	Splice Tray Kit - 24 LBT	Splice tray, 24 splice sleeves, 4 transport tubes, 8 cable ties
FSP-I-1x2	Splitter - 1 x 2	PLC Splitter single mode fiber input, single mode ribbon output
FSP-I-1x4	Splitter - 1 x 4	PLC Splitter single mode fiber input, single mode ribbon output
FSP-I-1x8	Splitter - 1 x 8	PLC Splitter single mode fiber input, single mode ribbon output
FSP-I-1x16	Splitter - 1 x 16	PLC Splitter single mode fiber input, single mode ribbon output
FSP-I-1x32	Splitter - 1 x 32	PLC Splitter single mode fiber input, single mode ribbon output
FIC-G3P25	End Grommet Kit - 3 ports	25 end-grommets, 25 retaining rings, 25 support bars
FIC-G4P25	End Grommet Kit - 4 ports	25 end-grommets, 25 retaining rings, 25 support bars
FIC-GCP25	End Grommet Kit - 2 ports, 16 drop ports	25 end-grommets, 25 retaining rings, 25 support bars
F12-G1P25	End Grommet Kit - feeder, 1 port	25 end grommets
F12-G4FP25	End Grommet Kit - flat drop, 4 ports	25 end grommets
F12-G4RP25	End Grommet Kit - round drop, 4 ports	25 end grommets
FIC-HA000	Aerial Hanger Kit	2 hanger arms, 2 mounting screws
FIC-PMBA1	Pole Mount Kit - Band	T-Bracket with stainless steel band
FIC-PMBO1	Pole Mount Kit - Bolt	T-Bracket with bolts

\*See the "FTTP Accessories" section for more detailed information.

# Fiber Dome Splice Closure (FDC)



## PRODUCT DESCRIPTION

The Superior Essex Fiber Dome Splice Closure (FDC) Series is made of a rugged, environmentally-resistant, molded plastic that makes this optical fiber splice closure ideal for Outside Plant (OSP) below-grade, aerial and direct buried applications.

The FDC Closure Series employs a lightweight, ribbed dome with a one-piece latch sealing ring to provide a low-cost, water-proof, impact-resistant closure for optimum fiber splice protection. The FDC is designed to support butt-end, branch and express cable configurations as well as round or flat drops. All FDC closures include a flash valve for seal verification.

The FDC Series offers four sizes of closures to accommodate splice capacities up to 576 Loose Buffer Tube (LBT) or 1,152 ribbon fiber counts. Most ancillary components necessary for installation are included with each FDC closure to simplify the installation. Additional cable grommets and splice trays are available as accessories.

The FDC Series is Telcordia® Technologies GR-771-CORE compliant.

## APPLICATIONS

- FTTx deployments where aerial, below-grade and direct buried, sealed optical fiber splicing is required

## FEATURES

- Lightweight, easy to install and re-enterable using a compression grommet cable sealing design with split base for express cables
- Designed to support multiple applications with one closure
- Durable, water-proof, UV-resistant compact design
- Designed for wide range of installation methods
- Variety of cable entry sizes and configurations
- Universal, hinged splice tray configuration
- Offered in four LBT fiber splice capacities: 96, 144, 288 and 576
- Includes ancillary components to support most installations

## BENEFITS

- Reduces installation and maintenance costs
- Reduces the number of closures for ordering and inventory
- Provides superior environmental protection from water, dust, insect and rodent intrusion
- Supports aerial, below-grade, direct-buried and pedestal applications
- Provides flexibility for cable routing diversity and drop cables
- Accommodates splice trays from popular suppliers
- Easy selection to support majority of fiber applications
- Reduced installation costs and inventory of "small parts"

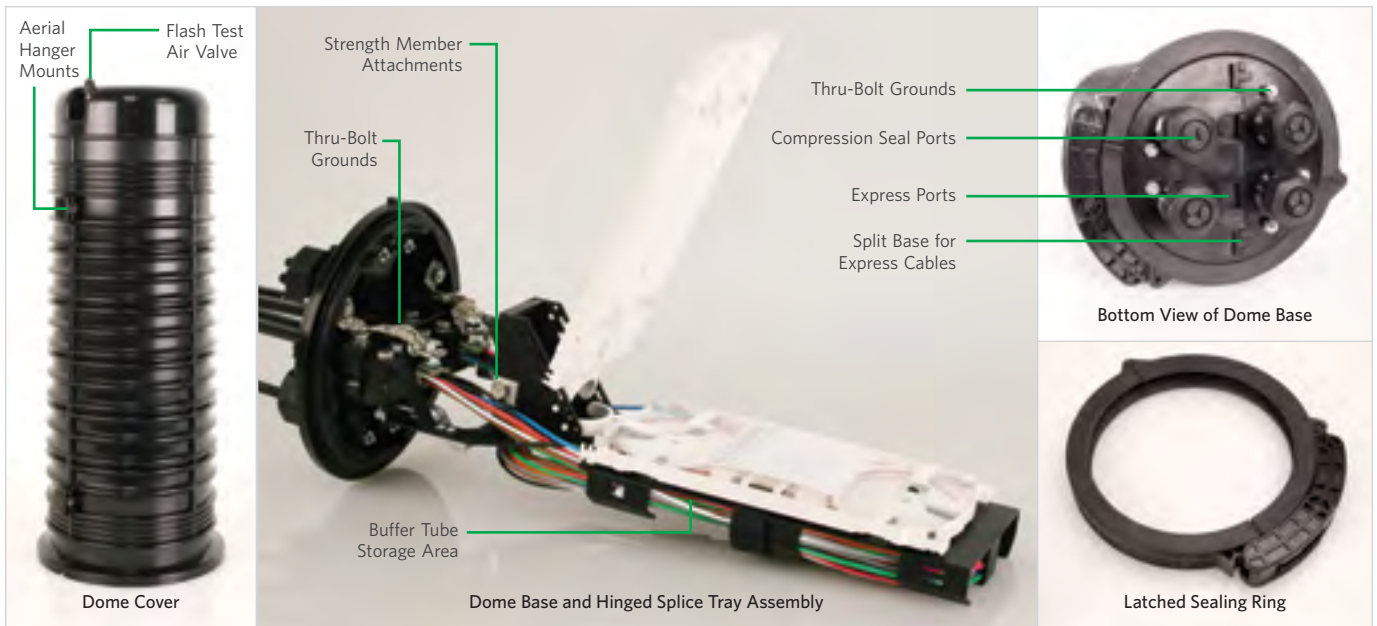
## COMPONENT CONTENTS

Item	FD2-A	FD2-B	FD2-C	FD2-D	Remarks
Dome cover	1	1	1	1	Factory installed
Closure base with gasket	1	1	1	1	Factory installed
Locking collar	1	1	1	1	Factory installed
Distribution cable entry grommets	2	4	4	4	Included
Round drop cable (7 - 9 mm) entry grommets	2	4	4	4	Included
Flat drop cable entry grommets	2	4	4	4	Factory installed
Cable ties	8	8	16	24	Included
Vacuum grease tube	1	1	2	2	Included
Silicone sealant tube	1	1	2	2	Included
Hose clamps	2	4	8	8	Included
Strength member attachment brackets	2	4	4	4	Included
Extra compression nut for feeder/drop port	1	1	1	1	Included
Loop-thru port spacers	8	8	8	8	Included
Loop-thru entry grommets	6	6	6	6	2 factory installed 4 included
Aerial hanger kit	1	1	1	1	Included
Sealing tape strips	2	2	4	4	Included
24-fiber splice tray (FDC-TD240)	1	1	-	-	Factory installed
36-fiber splice tray (FDC-TD360)	-	-	1	-	Factory installed
72-fiber splice tray (FDC-TD720)	-	-	-	1	Factory installed
Velcro splice tray strap	1	1	1	1	Included
Splice sleeves	24	24	36	72	Included
Spiral transportation tubes	4	4	6	12	Included
Outside diameter ruler	1	1	1	1	Included
Silica gel pack	1	1	1	1	Included
Alcohol tissue pack	1	1	1	1	Included

## SPECIFICATIONS

Material	ABS/polycarbonate
Dome Sealing/Locking	Single-latch sealing ring with padlock hasp
Seal Verification	Flash test air valve
Standards Compliance	Telcordia® Technologies GR-771-CORE, Issue 2 Rural Utilities Service (RUS) Listed

Telcordia is a registered trademark of Ericsson Inc.



**PORT AND GROUNDING SPECIFICATIONS**

Part Number	Number of Round Ports <sup>1</sup>	Round Port Cable O.D. Range in (mm)	Number of Express Ports	Express Port Cable O.D. Range in (mm)	Maximum Round or Flat Drops	Round/Flat Drop O.D. in (mm)	Port Sealing Method	Number of Thru-Bolt Grounds
FD2-AD10F	2	0.28-0.63 (7-16)	1 Dual cable	0.39-0.79 (10-20)	6	0.36/0.18 x 0.31 (9/4.5 x 8)	Compression seal	4
FD2-BD10F	4	0.28-0.63 (7-16)	1 Dual cable	0.39-0.79 (10-20)	12	0.36/0.18 x 0.31 (9/4.5 x 8)	Compression seal	6
FD2-CD10F	4	0.28-1.00 (7-25)	1 Dual cable	0.67-1.10 (17-28)	16	0.36/0.18 x 0.31 (9/4.5 x 8)	Compression seal	6
FD2-DD10F	4	0.28-1.00 (7-25)	1 Dual cable	0.67-1.28 (17-32)	16	0.36/0.18 x 0.31 (9/4.5 x 8)	Compression seal	6

<sup>1</sup>Round ports can be used for a single feeder cable or multiple round or flat drops.

**DIMENSIONS AND FIBER/STORAGE CAPACITIES**

Part Number	Height in (mm)	Diameter in (mm)	Weight lbs (kg)	Splice Tray Capacity		Fiber Splice Capacity <sup>2</sup>		Fiber Slack Storage	
				Loose Tube	Ribbon	Loose Tube <sup>2</sup>	Ribbon <sup>2</sup> (144 per tray)	Loose Tubes (8 ft per tube)	Ribbons (8 ft per ribbon)
FD2-AD10F	15.2 (385)	7.0 (177)	5.5 (2.5)	4	2	96	216	8	18
FD2-BD10F	18.3 (466)	7.8 (199)	7.7 (3.5)	6	2	144	216	12	18
FD2-CD10F	20.9 (532)	9.7 (246)	13.2 (6.0)	8	6	288	864	24	72
FD2-DD10F	26.9 (682)	9.7 (246)	17.6 (8.0)	8	8	576	1,152	48	96

<sup>2</sup>Refer to the "Port and Grounding Specifications" table above to verify compatibility of the Cable O.D. with the Fiber Splice Capacity prior to closure selection.

**ACCESSORIES**

Part Number	Description	FDC Compatibility	Kit Components
FDC-TE144	Splice Tray Kit - 144 Ribbon	All	Splice tray, 12 ribbon splice sleeves, 4 transport tubes, 8 cable ties
FDC-TD240	Splice Tray Kit - 24 LBT	All	Splice tray, 24 splice sleeves, 4 transport tubes, 8 cable ties
FDC-TD360	Splice Tray Kit - 36 LBT	Type C	Splice tray, 36 splice sleeves, 6 transport tubes, 16 cable ties
FDC-TD720	Splice Tray Kit - 72 LBT	Type D	Splice tray, 72 splice sleeves, 12 transport tubes, 24 cable ties
FSP-D-1x2	Splitter - 1 x 2	All	PLC Splitter single mode fiber input, single mode ribbon output
FSP-D-1x4	Splitter - 1 x 4	All	PLC Splitter single mode fiber input, single mode ribbon output
FSP-D-1x8	Splitter - 1 x 8	All	PLC Splitter single mode fiber input, single mode ribbon output
FSP-D-1x16	Splitter - 1 x 16	All	PLC Splitter single mode fiber input, single mode ribbon output
FSP-D-1x32	Splitter - 1 x 32	All	PLC Splitter single mode fiber input, single mode ribbon output
FD2-APLMT	Pole Mount Kit	Type A	Mounting bracket, 2 lag screws, 2 lock washers
FD2-BPLMT	Pole Mount Kit	Type B	Mounting bracket, 2 lag screws, 2 lock washers
FD2-CPLMT	Pole Mount Kit	Type C, Type D	Mounting bracket, 3 lag screws, 3 lock washers
FD2-GDR07	End Grommet Kit - 3 round drop ports (7 mm)	Type A, Type B	25 grommets
FD2-GDR09	End Grommet Kit - 2 round drop ports (9 mm)	Type A, Type B	25 grommets
FD2-GDF08	End Grommet Kit - 3 flat drop ports (4.5 x 8 mm)	Type A, Type B	25 grommets
FD2-GFR12	End Grommet Kit - 1 round port (9-12 mm)	Type A, Type B	25 grommets
FD2-GFR16	End Grommet Kit - 1 round port (13-16 mm)	Type A, Type B	25 grommets
FD2-CFR20	End Grommet Kit - 1 round port (20 mm)	Type C, Type D	25 grommets
FD2-CFR25	End Grommet Kit - 1 round port (25 mm)	Type C, Type D	25 grommets
FD2-CDR07	End Grommet Kit - 4 round ports (7-9 mm)	Type C, Type D	25 grommets
FD2-CDF08	End Grommet Kit - 4 flat drop ports (4.5 x 8 mm)	Type C, Type D	25 grommets
FD2-CTOOL	Compression Connector Wrench	All	1 wrench

# FDH-288 Series Fiber Distribution Hub (FDH)



## FDH SPECIFICATIONS

Distribution Fiber Capacities	72, 144, 216 or 288 fiber adapters
Mounting Configurations	Pad or vault
Dimensions H x W x D in (mm)	Vault-mount: 43.7 x 26.4 x 15.8 (1,110 x 671 x 401) Pad-mount: 49.2 x 26.4 x 15.8 (1,250 x 671 x 401)
Weight lbs (kg)	80 (36.36)
Adapter Type	SC/APC
Fiber Type	Loose buffer tube or ribbon
Maximum Number of Splitter Input Fibers	12
Splitter Module Capacity	12
Parking Lot Capacity	72 adapters
Color	Beige
Standards Compliance	Telcordia® Technologies GR-3125-CORE, Issue 1

Telcordia is a registered trademark of Ericsson Inc.

## SPLITTER MODULE SPECIFICATIONS

Splitter Ratio <sup>1</sup>	Insertion Loss		Return Loss dB	Directivity dB	PDL dB	Band Pass nm	Operating Temp. °C
	Max. <sup>2</sup> dB	Uniformity dB					
1 x 4	≤ 7.6	≤ 0.6	≥ 55	≥ 55	≤ 0.2	1260 to 1650	-40 to 85
1 x 8	≤ 11.0	≤ 0.8	≥ 55	≥ 55	≤ 0.3	1260 to 1650	-40 to 85
1 x 16	≤ 13.7	≤ 1.0	≥ 55	≥ 55	≤ 0.3	1260 to 1650	-40 to 85
1 x 32	≤ 16.9	≤ 1.3	≥ 55	≥ 55	≤ 0.3	1260 to 1650	-40 to 85

<sup>1</sup>All splitter modules comply with ITU-T G.652 and G.657.A recommendations

<sup>2</sup>Does not include connector loss

## PART NUMBERS

Part Number	Description
FDH-AA000	FDH weather-proof cabinet, pad mount, 72 SC/APC adapters <sup>3</sup>
FDH-BA000	FDH weather-proof cabinet, pad mount, 144 SC/APC adapters <sup>3</sup>
FDH-CA000	FDH weather-proof cabinet, pad mount, 216 SC/APC adapters <sup>3</sup>
FDH-DA000	FDH weather-proof cabinet, pad mount, 288 SC/APC adapters <sup>3</sup>
FDH-SMD14	Splitter Module - 1 x 4
FDH-SMD18	Splitter Module - 1 x 8
FDH-SM116	Splitter Module - 1 x 16
FDH-SM132	Splitter Module - 1 x 32

<sup>3</sup>Preconnectorized cable or in-hub splicing capable; splice trays not included.

## PRODUCT DESCRIPTION

The Superior Essex FDH-288 Series Fiber Distribution Hub (FDH) is designed to provide a local convergence point in an Outside Plant (OSP) environment. The FDH-288 houses optical splitters that propagate optical signal from the Central Office (CO) to the distribution cable network that serves fiber to the customer's premises. Its compact and modular design offers a cost-effective fiber distribution solution with ease of installation. This modular approach enables the service provider to incrementally grow fiber distribution capacity as their subscriber penetration rate increases. SC adapter distribution panels are available in 72-port increments, thus providing 72, 144, 216 and 288 fiber capacity configurations. The service provider can purchase additional SC adapter panels after the initial installation to increase fiber distribution capacity on a "pay-as-you-grow" basis, offering a more cost-effective means of managing deployment costs.

## PRODUCT HIGHLIGHTS

- Powder-coated, aluminum, non-corrosive construction with 3-point door lock system
- Single-entry door conducive to pad and vault mounting
- Internal self-locking, swinging panel for SC adapter and parking lot receptacles
- Centrally located, 12-position splitter module shelf
- Splitter modules available in 1 x 4, 1 x 8, 1 x 16 or 1 x 32 ratios
- Each cabinet supports in-hub splicing or preconnectorized terminations for feeder and distribution cables
- Telcordia® GR-3125, Issue 1 compliant

## APPLICATIONS

- The FDH-288 provides a connectorized path between passive optical splitters fed from the CO and distribution optical fiber cables that transport the optic signal to the customer's premises for voice, data and video services. The FDH-288 facilitates rapid service provisioning and reconfiguration, thus improving installation efficiencies in the field.

## FEATURES

- Modular SC adapter distribution panels
- Small, compact weather-proof enclosure
- Enhanced bend radius control, slack storage and fiber routing
- Secure, single-entry door with pad lock hasp

## BENEFITS

- Offers cost-effective, "pay-as-you-grow" deployment
- Offers an aesthetically-pleasing package for OSP deployment
- Provides optimal fiber management, protection and performance
- Offers flexibility for pad or vault mounting options

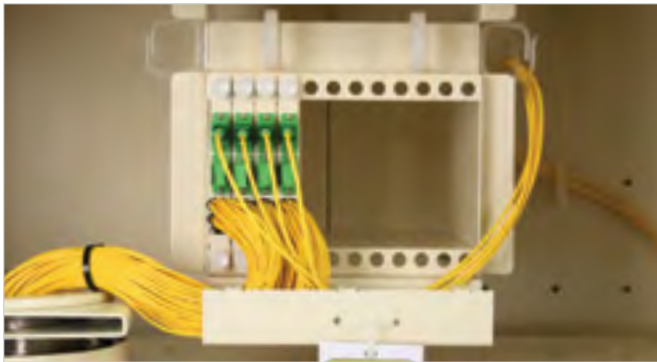




Self-Locking, Swinging Adapter Panel Assembly



Fiber Management and Bend Radius Control



Conveniently-Located Splitter Module Shelf



Slide-Out, In-Hub Splicing Option

**ACCESSORIES**

Part Number	Description	Kit Components
FIC-TD120	Splice Tray Kit - 12 LBT or 144 Ribbon	Splice tray, 12 splice sleeves, 4 transport tubes, 8 cable ties
FIC-TD240	Splice Tray Kit - 24 LBT	Splice tray, 24 splice sleeves, 4 transport tubes, 8 cable ties
FDH-SCA72	72-SC Adapter Panel (SC/APC)	3 panels of 24 SC/APC adapters with mounting screws
FDP-xy1A0 <sup>1</sup>	Preconnectorized feeder or distribution cable	100 ft cable assembly with labeled SC/APC connectors

**FEEDER / DISTRIBUTION CABLE SIZE**

Feeder Cable Size (number of fibers)			Distribution Cable Size (number of fibers)				
12	24	48	72	144	216	288	
<sup>1</sup> Replace "x" with:	A	B	C	D	E	F	G

**CABLE TYPE (FEEDER AND DISTRIBUTION)**

	Single Armor Loose Tube	Dielectric Loose Tube	Armored Ribbon	Dielectric Ribbon
<sup>1</sup> Replace "y" with:	A	B	C	D



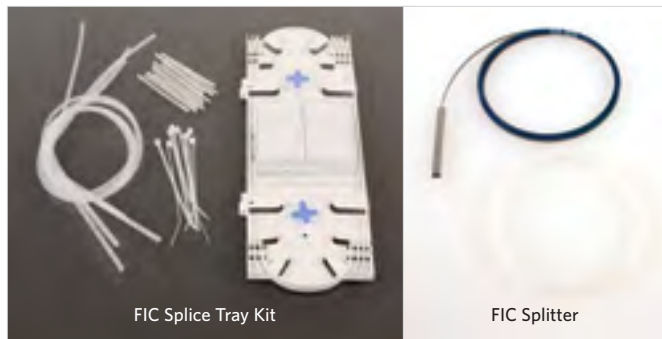
**OLDCASTLE ENCLOSURES AND LIDS<sup>2</sup>**

Part Number	Description	Depth in (mm)	Dimensions		Material	Rated
			L x W in (mm)			
30486010	Below-grade vault	18 (457)	48 x 30	(1,219 x 762)	Polymer concrete	T15
30486011	Below-grade vault	24 (610)	48 x 30	(1,219 x 762)	Polymer concrete	T15
30486012	Below-grade vault	30 (762)	48 x 30	(1,219 x 762)	Polymer concrete	T15
30486013	Below-grade vault	36 (914)	48 x 30	(1,219 x 762)	Polymer concrete	T15
30487622	Blank lid-half	3 (76)	24 x 30	(610 x 762)	Polymer concrete	T15
30487055	Cut-out lid-half for FDH-288	3 (76)	24 x 30	(610 x 762)	Polymer concrete	-

<sup>2</sup>Oldcastle enclosures and lids must be ordered from Oldcastle Enclosure Solutions at 1.800.735.5566



# FIC Tray Kits/Splitters



## PRODUCT DESCRIPTION

The FIC splice tray kit is used to organize and splice fibers.

The FIC splitter is used to split one or two fibers into 2, 4, 8, 16, or 32 channels.

## PART NUMBERS AND KIT COMPONENTS

Part Number	Description	Fiber Capacity	Kit Components
FIC-TD120	FIC Splice Tray Kit	12 Loose Buffer Tube or 144 Ribbon	<ul style="list-style-type: none"> <li>One (1) splice tray, cover and assignment label</li> <li>12 ribbon splicing sleeves</li> <li>Four (4) spiral transportation tubes</li> <li>Eight (8) cable ties</li> </ul>
FIC-TD240	FIC Splice Tray Kit	24 Loose Buffer Tube	<ul style="list-style-type: none"> <li>One (1) splice tray, cover and assignment label</li> <li>24 splicing sleeves</li> <li>Four (4) spiral transportation tubes</li> <li>Eight (8) cable ties</li> </ul>
FSP-I-1x2	FIC Splitter 1 x 2	1 in, 2 out	PLC Splitter single mode fiber input, single mode ribbon output
FSP-I-1x4	FIC Splitter 1 x 4	1 in, 4 out	PLC Splitter single mode fiber input, single mode ribbon output
FSP-I-1x8	FIC Splitter 1 x 8	1 in, 8 out	PLC Splitter single mode fiber input, single mode ribbon output
FSP-I-1x16	FIC Splitter 1 x 16	1 in, 16 out	PLC Splitter single mode fiber input, single mode ribbon output
FSP-I-1x32	FIC Splitter 1 x 32	1 in, 32 out	PLC Splitter single mode fiber input, single mode ribbon output

# FIC End Grommet Kits

## PRODUCT DESCRIPTION

The FIC end grommet kit is used to seal cable entry for drop and branch cables. Each cable port accommodates a cable from 9 mm to 26 mm in diameter. Each drop port accommodates a cable from 3 mm to 9 mm in diameter.



## PART NUMBERS AND KIT COMPONENTS

Part Number	Description	Port Capacity	Kit Components
FIC-G3P25	FIC End Grommet Kit	3 cable ports	<ul style="list-style-type: none"> <li>• 25 end-grommets</li> <li>• 25 two-piece, oval retaining rings</li> <li>• 25 metal support bars</li> </ul>
FIC-G4P25	FIC End Grommet Kit	4 cable ports	<ul style="list-style-type: none"> <li>• 25 end-grommets</li> <li>• 25 two-piece, oval retaining rings</li> <li>• 25 metal support bars</li> </ul>
FIC-GCP25	FIC End Grommet Kit	2 cable ports and 16 drop ports	<ul style="list-style-type: none"> <li>• 25 end-grommets</li> <li>• 25 two-piece, oval retaining rings</li> <li>• 25 metal support bars</li> </ul>
FI2-G1P25	FI2 End Grommet Kit	1 feeder port	<ul style="list-style-type: none"> <li>• 25 end grommets</li> </ul>
FI2-G4FP25	FI2 End Grommet Kit	4 flat drop ports	<ul style="list-style-type: none"> <li>• 25 end grommets</li> </ul>
FI2-G4RP25	FI2 End Grommet Kit	4 round drop ports	<ul style="list-style-type: none"> <li>• 25 end grommets</li> </ul>

# FIC Hanger Kits

## PRODUCT DESCRIPTION

The FIC aerial hanger kit is used to strand-mount and support all Fiber In-Line Closures (FIC) on a 3/4 inch Messenger cable. Each hanger arm provides additional holes to accommodate most universal hanging brackets and hardware. Each kit will support one (1) in-line closure.

The FIC pole mount kit is used to attach an In-Line Closure (FIC and FI2) to a pole using either a stainless steel band or bolts.



## PART NUMBERS AND KIT COMPONENTS

Part Number	Description	Kit Components
FIC-HA000	Aerial Hanger Kit	<ul style="list-style-type: none"> <li>• Two (2), 6 inch hanger arms with fasteners</li> <li>• Two (2) Phillips-head mounting screws</li> </ul>
FIC-PMBA1	Pole Mount Kit - Band	<ul style="list-style-type: none"> <li>• T-Bracket with stainless steel band</li> </ul>
FIC-PMBO1	Pole Mount Kit - Bolt	<ul style="list-style-type: none"> <li>• T-Bracket with bolts</li> </ul>

## FDC Tray Kits/Splitters



### PRODUCT DESCRIPTION

The FDC splice tray kit is used to organize and splice fibers.

The FDC splitter is used to split one or two fibers into 2, 4, 8, 16, or 32 channels.

### PART NUMBERS AND KIT COMPONENTS

Part Number	Description	Fiber Capacity	Kit Components
FDC-TE144	FDC Splice Tray Kit	144 Ribbon	<ul style="list-style-type: none"> <li>One (1) hinged-splice tray, cover and assignment label</li> <li>12 ribbon splicing sleeves</li> <li>Four (4) spiral transportation tubes</li> <li>Eight (8) cable ties</li> </ul>
FDC-TD240	FDC Splice Tray Kit	24 Loose Buffer Tube	<ul style="list-style-type: none"> <li>One (1) hinged-splice tray, cover and assignment label</li> <li>24 splicing sleeves</li> <li>Four (4) spiral transportation tubes</li> <li>Eight (8) cable ties</li> </ul>
FDC-TD360	FDC Splice Tray Kit	36 Loose Buffer Tube	<ul style="list-style-type: none"> <li>One (1) hinged-splice tray, cover and assignment label</li> <li>36 splicing sleeves</li> <li>Six (6) spiral transportation tubes</li> <li>16 cable ties</li> </ul>
FDC-TD720	FDC Splice Tray Kit	72 Loose Buffer Tube	<ul style="list-style-type: none"> <li>One (1) hinged-splice tray, cover and assignment label</li> <li>72 splicing sleeves</li> <li>12 spiral transportation tubes</li> <li>24 cable ties</li> </ul>
FSP-D-1x2	FDC Splitter 1 x 2	1 in, 2 out	PLC Splitter single mode fiber input, single mode ribbon output
FSP-D-1x4	FDC Splitter 1 x 4	1 in, 4 out	PLC Splitter single mode fiber input, single mode ribbon output
FSP-D-1x8	FDC Splitter 1 x 8	1 in, 8 out	PLC Splitter single mode fiber input, single mode ribbon output
FSP-D-1x16	FDC Splitter 1 x 16	1 in, 16 out	PLC Splitter single mode fiber input, single mode ribbon output
FSP-D-1x32	FDC Splitter 1 x 32	1 in, 32 out	PLC Splitter single mode fiber input, single mode ribbon output

## FDC Pole Mount Kits



### PRODUCT DESCRIPTION

For fiber deployment in excessive snow regions or where additional security is required, the FDC Pole Mount Kit offers an alternative to aerial, below-grade or direct-buried deployment, to provide easy access and additional security. Each kit contains a pole mount bracket and associated hardware, to install any of the FDC Dome Closures to a wood pole.

### PART NUMBERS AND KIT COMPONENTS

Part Number	FDC Compatibility	Kit Components
FD2-APLMT	Type A	<ul style="list-style-type: none"> <li>One (1) galvanized mounting bracket</li> <li>Two (2) 3/8 inch x 3 inch galvanized lag screws</li> <li>Two (2) 3/8 inch galvanized lock washers</li> </ul>
FD2-BPLMT	Type B	<ul style="list-style-type: none"> <li>One (1) galvanized mounting bracket</li> <li>Two (2) 3/8 inch x 3 inch galvanized lag screws</li> <li>Two (2) 3/8 inch galvanized lock washers</li> </ul>
FD2-CPLMT	Type C, Type D	<ul style="list-style-type: none"> <li>One (1) painted mounting bracket</li> <li>Three (3) 3/8 inch x 3 inch galvanized lag screws</li> <li>Three (3) 3/8 inch galvanized lock washers</li> </ul>

# FDC Compression Grommet Kits

## PRODUCT DESCRIPTION

The FDC compression grommet kit is used to seal cable entry for drop and branch cables. Cable grommets accommodate a cable from 9 mm to 25 mm in diameter. Drop grommets accommodate a round or flat drop cable from 7 mm to 9 mm.



## PART NUMBERS AND KIT COMPONENTS

Part Number	FDC Compatibility	Number of Ports	Kit Components
FD2-GDR07	Type A, Type B	3 round drop ports (7 mm)	25 grommets
FD2-GDR09	Type A, Type B	2 round drop ports (9 mm)	25 grommets
FD2-GDF08	Type A, Type B	3 flat drop ports (4.5 x 8 mm)	25 grommets
FD2-GFR12	Type A, Type B	1 round port (9-12 mm)	25 grommets
FD2-GFR16	Type A, Type B	1 round port (13-16 mm)	25 grommets
FD2-CFR20	Type C, Type D	1 round port (20 mm)	25 grommets
FD2-CFR25	Type C, Type D	1 round port (25 mm)	25 grommets
FD2-CDR07	Type C, Type D	4 round ports (7-9 mm)	25 grommets
FD2-CDF08	Type C, Type D	4 flat drop ports (4.5 x 8 mm)	25 grommets

# FDC Compression Connector Wrench

## PRODUCT DESCRIPTION

The FDC compression connector wrench is used to secure the lock nut of the compression connector on all four types of the FD2 closure.



## PART NUMBERS AND KIT COMPONENTS

Part Number	Kit Components
FD2-CTOOL	1 wrench

# Terms and Conditions of Sale

## For Communication and Energy Cable, Wire and Connectivity Products

### 1. GENERAL

These Terms and Conditions of Sale (the "Terms") govern Buyer's purchase of any communication and energy cable, wire and connectivity products (the "Products") from Superior Essex International LP ("Seller"). Buyer's purchase of the Products is limited to the terms and conditions contained herein. If these Terms are first tendered to Buyer before Buyer tenders a purchase order or similar document to Seller, these Terms are in lieu of any terms later submitted by Buyer and Seller rejects all additional or different terms and conditions of Buyer, whether confirmatory or otherwise. If Seller tenders these Terms after the tender by Buyer of other terms, whether as part of a purchase order or otherwise, then Seller's acceptance of any offer by Buyer associated with Buyer's terms is expressly conditioned upon Buyer's acceptance of these Terms exclusively and to the exclusion of any proffered Buyer terms or conditions, regardless of whether these Terms contain any terms additional to, or different from, any terms proffered by Buyer. Buyer's performance, or acceptance of, or payment for, any products from Seller will constitute Buyer's acceptance of these Terms exclusively. If there is an executed written sales agreement or quotation in effect between the parties (a "Sales Agreement"), these Terms form a part thereof. Waiver by Seller of any breach, remedy or provision of these Terms shall not be construed to be a waiver of any succeeding breach or any other provision or legal remedy of Seller. The section headings of these Terms are for ease of reference only and shall not be admissible in any action to alter, modify or interpret the contents of any section hereof. The International Convention on the Sale of Goods shall have no application to any sales of Products hereunder.

### 2. PRICE, CHARGES AND PAYMENT

Orders are not binding upon Seller until accepted by Seller in its sole discretion. No order submitted by Buyer shall be deemed accepted by Seller unless and until either confirmed in writing by Seller or by delivery of the Product specified in the order, and then only on these Terms. Seller may modify Buyer's order where necessary as follows: (a) substituting the latest or correct part number or part description for the part number or part description set forth on the order; (b) substituting Seller's prices in effect as applicable to the order; (c) substituting an estimated delivery schedule which is reasonable (considering Seller's stock availability and lead time); and (d) correcting any stenographical or typographical error. The price of any Product sold to Buyer shall be Seller's price in effect at time of order entry. Prices for energy cable products will be adjusted at the time of shipment to reflect the closing COMEX metal price on the date prior to the ship date. Seller's current ancillary charges apply as applicable to the order such as parallel, cut, wood lagging, gas pressure, pulling eye and lift gate charges.

Fees for and relating to the Products are subject to adjustment in the event there are cost increases created by circumstances such as, but not limited to, changes in government energy policies, fuel and energy increases, metal premium or metal processing charges, chemical or material price increases, material and supply shortages, transportation and shipping costs. Any accepted order requiring special manufacturing processes, inspection, specified weight, packaging, test results, certification, etc., is subject to additional charges.

Unless otherwise agreed to by Seller in writing, Buyer agrees to pay all amounts due to Seller within thirty (30) days from the date of invoice. Overdue payments shall bear interest and service charges from the due date until paid at a rate of 1.5% (015) per month or the maximum legal rate, whichever is less, and any collection costs of Seller. FAILURE TO PAY ANY AMOUNT WHEN DUE VOIDS ALL WARRANTIES.

Credit is extended at the sole discretion of Seller. If credit has been extended, the amount of credit may be changed or credit withdrawn by Seller at any time, in its sole discretion. If a cash discount is stipulated, it is subject to Buyer's entire account being current. Any discounts given to Buyer by Seller in relation to the price of the Products are conditional upon payment for the Products being made strictly in accordance with the Sales Agreement and these Terms and to Buyer's entire account for all products purchased from Seller being current.

### 3. DELIVERY, TITLE, RISK OF LOSS, AND SHIPPING OF PRODUCTS

Title to and risk of loss of the Products shall pass to Buyer upon tender of such Products to Buyer at Seller's factory or a common carrier. Unless otherwise agreed by Seller in writing, shipping terms shall be Ex Works (Incoterms 2010) Seller's factory or warehouse. Seller's weights shall govern provisional and final settlement. Any shipping date provided by Seller is the Seller's best estimate and will not operate to bind Seller to ship or make deliveries on such date. All shipments shall be subject to Seller's then current shipment terms, including its Freight Policies, Freight Damage Policies, and minimum order values.

Buyer must thoroughly inspect the Products at the time of receipt for signs of damage, discrepancies or a shortage. Inspections of the Products at the time of delivery shall be commenced in the presence of the carrier's driver and Buyer shall note on the freight bill any shortages, discrepancies or damages of any Product received on the carrier's receipt. If concealed loss or damage is discovered, Buyer must report it to the carrier within 15 days from the date of receipt.

### 4. LIMITED WARRANTIES AND DISCLAIMERS

Seller warrants to Buyer that at the time of delivery the Products will conform substantially to Seller's specifications identified in the applicable Product Data Sheets ("Specifications"). As Buyer's sole and exclusive remedy and Seller's entire liability for any breach of the foregoing warranty, Seller will, at its sole option and expense, either refund the purchase price paid, repair or replace the Product which fails to meet this warranty upon return of the nonconforming Product; provided, Buyer notifies Seller of noncompliance in writing:

- for Fiber to the Premises Closure Products ("FTTP"), within ten (10) years of delivery for external plastic and metal parts of the closure and within one (1) year of delivery for internal fiber splice, attachment and management components; and
- for all other Products, within one (1) year of delivery of such Product.

Transportation charges to and from Seller's location for the return of all nonconforming Products to Seller and their re-shipment to Buyer and the risk of loss thereof will be borne by Seller. Buyer shall use Seller's designated carrier for all re-shipments. These warranties do not apply to any Product that was not properly stored or handled by the Buyer, that was repaired or altered or was otherwise subject to abuse, neglect or improper use by Buyer or a third party, or that has any stage of processing performed on it which causes the defect. EXCEPT WITH RESPECT TO THE SPECIFIC WARRANTIES SET FORTH IN THIS SECTION 4 OF THESE TERMS, SELLER MAKES NO OTHER WARRANTIES WHATSOEVER, EXPRESS OR IMPLIED, REGARDING THE PRODUCTS OR PERFORMANCE OF ITS OBLIGATIONS HEREUNDER, AND SPECIFICALLY DISCLAIMS ANY WARRANTIES OF MERCHANTABILITY OR FITNESS FOR A PARTICULAR PURPOSE. Without limitation, under no circumstances shall Seller be liable for any costs associated with reworking, re-manufacturing or scrapping goods in which defective Product supplied by Seller was incorporated, for any costs associated with production stoppages, machinery breakdown or recall campaigns, or for any troubleshooting, administrative or engineering charges.

### 5. CLAIMS OF PATENT INFRINGEMENT

Seller shall conduct, at its own expense, the entire defense of any claim, suit, action or other proceedings ("Claim") brought against Buyer by a third party alleging that any Product manufactured by Seller infringes upon any United States patent of any third party; provided, however: (i) Seller receives prompt written notice of the Claim; (ii) Seller has full control of the defense and all related settlement negotiations; (iii) the Products are made according to a specification or design furnished by Seller, or if a process patent is involved, the process performed by the Products are recommended in writing by Seller; and (iv) Buyer provides Seller with all necessary assistance, information and authority to perform the defense and negotiate settlement thereof. Provided all four of the foregoing conditions are met, Seller shall, at its own expense, either settle said Claim or shall pay all damages (excluding incidental, consequential, statutory, or punitive damages) and costs awarded by the court therein. If the use or resale of such Products is finally enjoined, Seller shall, at Seller's option, procure for Buyer the right to use or resell the Products, replace them with equivalent non-infringing Products, modify them so they become non-infringing but equivalent, or remove them and refund the purchase price (less a reasonable allowance for use, damage or obsolescence). Buyer shall indemnify and hold Seller harmless from all Claims based upon (i) the use of a Product customized for Buyer based on Buyer's ideas, specifications or designs, (ii) the performance of a process performed by the Products not recommended in writing by Seller, or (iii) the use or sale of the Products delivered hereunder in combination with other products not delivered to Buyer by Seller.

### 6. EXCUSABLE PERFORMANCE

Seller is excused from performing any of its obligations under these Terms, any order or Sales Agreement if its performance is prevented, hindered or delayed by delays of suppliers, acts of God, nature, governments or their agencies, terrorism, war or sabotage, compliance in good faith with any applicable foreign or domestic governmental regulation or order (whether or not it proves to be invalid), fires, riots, inability to supply or obtain products, materials, raw materials, supplies, fuel or utilities from normal sources of supply, labor disputes, work stoppages, lockouts, delays in transportation, earthquakes, floods, storms

or other severe weather conditions, power shortages or power failures or any other events or circumstances beyond Seller's reasonable control (an "Event"). To the extent an Event delays Seller's performance, such performance shall be extended for as many days beyond the due date until the delay concludes; provided, however, if Seller is unable to perform any of its obligations under any order due to an Event for more than thirty (30) days, it may in its sole option terminate, without liability or penalty, any Sales Agreement, order or obligation in whole or in part. It is expressly understood that the Seller has available a limited source for the materials used by Seller in the manufacture of the Products. If there is an interference, limitation or cessation of any material from Seller's source of supply for any reason, Buyer agrees to relieve the Seller temporarily, proportionately, or permanently of liability under these Terms or any Sales Agreement or order, depending upon whether the interruption of the source of supply is a temporary interruption, a reduced delivery of materials, or a permanent cessation of supply. In the event there is a Product shortage pursuant to this section, Seller may ration and distribute such Products as it deems appropriate.

### 7. TAXES AND EXPORTS

Any and all taxes (not including any U.S. income or excess profit taxes attributable to Seller) which may be imposed by any taxing authority, arising from the sale, delivery or use of the Products and for which Seller may be held responsible for collection or payment, either on its own behalf or that of Buyer, shall be paid by Buyer to Seller upon Seller's demand. Export orders are subject to applicable export regulations and requirements. Buyer disclaims in favor of Seller any right or interest in, the drawback of duty, taxes or surcharges paid on imported material contained in the Products.

### 8. FINANCIAL RESPONSIBILITY OF BUYER

Buyer's solvency is a condition of Seller's performance and Seller may, at any time, in its sole discretion for credit reasons (including a good faith belief that a current or future payment is or may be impaired) or because of Buyer's breach of this or any other agreement with Seller, suspend or change credit terms, fix a limit on credit, require progress payments, demand payment in full of any outstanding balance, withhold shipments, demand COD or request other assurances of payment, cancel or terminate any order or agreement or repossess all Products previously delivered, which Products shall become the absolute property of Seller subject to credit therefore. Buyer grants to Seller a security interest in Products delivered hereunder to secure Buyer's obligations under these Terms and any Sales Agreement and grants to Seller the right to execute, deliver, and/or file any financing statement or do any other thing reasonably necessary to perfect Seller's security interest. Notwithstanding any other provision of these Terms, Seller reserves the right in its absolute discretion from time to time to require payment in full of the price of the Products before delivery of all or any of the Products.

Seller may terminate any order or Sales Agreement by written notice to Buyer if (i) a receiver or trustee is appointed for any of Buyer's property; (ii) Buyer is adjudicated or voluntarily becomes bankrupt or a debtor under any bankruptcy, dissolution or reorganization laws or similar law; (iii) Buyer becomes insolvent or makes an assignment for the benefit of creditors; (iv) an execution is issued pursuant to a judgment rendered against Buyer; or (v) Buyer is unable or refuses to make payment to Seller. If any order or Sales Agreement is terminated by Seller pursuant to this section, Seller shall be relieved of any further obligation to Buyer and Buyer shall reimburse Seller for its termination costs and expenses and a reasonable allowance for profit.

In addition to any right of set off or recoupment provided by law, Buyer agrees that all its accounts with Seller will be administered on a net settlement basis and that Seller may set off debits and credits, including Seller's attorney fees and costs of enforcement, against any of Buyer's accounts regardless of the basis for such debits and credits and without advance notice. In this section, "Seller" includes Seller's parent, subsidiaries and affiliates, and "Buyer" includes Buyer's parent, subsidiaries and affiliates.

### 9. CANCELLATIONS AND RETURNS

All orders accepted by Seller are non-cancelable unless (i) such order is cancelled in writing thirty (30) days prior to the scheduled ship date and (ii) the Products ordered were not manufactured as special or customized items. A cancellation fee of 10% of the quoted price shall apply. If paid for, cancelled Products may be returned for credit only. Return of any Product must be authorized by Seller. Seller will provide Buyer a Return Material Authorization number for all authorized returns which must be shown on the returned Product and associated shipping documents. Standard stock items are returnable at invoice price less a 20% restocking charge, freight prepaid by Buyer to the plant of manufacture or Seller's designated location. Non-stock items, special items and/or custom length cut reels of energy cables are final sales and not subject to return. All material must be returned to Seller undamaged and in the original packaging.

### 10. CHANGES — PROCESS, MATERIAL AND PRODUCT DESIGN

Seller continually develops and uses new processes, materials and product designs in an effort to improve its Products, while maintaining conformity to the Specifications. If Buyer's applications of the Products rely upon any performance, dimensional or constant criteria other than as required by the applicable Specifications, Buyer must conduct regular testing or evaluation of those specific Products. Seller makes no warranty or representation of any nature that any material shipped conforms to any material of like product description as may have previously been delivered to Buyer.

### 11. LIMITATION OF LIABILITY

IN NO EVENT WILL SELLER BE LIABLE TO BUYER FOR ANY INDIRECT, INCIDENTAL, SPECIAL, PUNITIVE, DELAY, OR CONSEQUENTIAL DAMAGES, INCLUDING WITHOUT LIMITATION, LOSS OF DIRECT OR INDIRECT PROFITS, REVENUE, OR USE, WHETHER ARISING IN CONTRACT, TORT, OR OTHERWISE, EVEN IF BUYER OR ANY OTHER PARTY HAS BEEN ADVISED OF THE POSSIBILITY OF SUCH DAMAGES. IN NO EVENT WILL SELLER'S AGGREGATE LIABILITY TO BUYER EXCEED ALL AMOUNTS ACTUALLY PAID BY BUYER TO SELLER. THESE LIMITATIONS SHALL APPLY NOTWITHSTANDING ANY FAILURE OF ESSENTIAL PURPOSE OF THE LIMITED REMEDY SET FORTH IN SECTION 4.

### 12. CONFIDENTIALITY

Buyer will not disclose to third persons any proprietary or confidential information of Seller concerning its business and operations, including without limitation, pricing information, for a period of five (5) years from the date such confidential information was learned or for confidential information meeting the definition of "trade secret" under applicable law, until such information is no longer a "trade secret." The obligations of confidentiality in this Section 12 do not apply to Confidential Information to the extent that the Confidential Information becomes readily ascertainable by proper means by the public other than through breach of this Section 12 by Buyer.

### 13. CHOICE OF LAW

These Terms and all accepted orders shall be construed in accordance with the laws of the State of Georgia, United States of America without regard to its conflict of law principles. Buyer agrees that any and all disputes with Seller, including contract and tort claims, shall be resolved in the state and federal courts situated in Georgia, and that these courts shall have the exclusive jurisdiction over all such disputes and Buyer consents to the personal jurisdiction in these courts. Any action brought by Buyer against Seller shall be within one (1) year after the cause of action arises or it shall be deemed forever waived.

### 14. ADDITIONAL TERMS

The provisions of these Terms and the Sales Agreement, if any, constitute the entire agreement between Buyer and Seller with respect to the matter contained herein and supersedes any prior oral or written communications, understanding, representations, proposals or agreements with respect to such subject matter. Seller may revise these Terms from time to time. These Terms may not be amended or modified by the Buyer except upon the execution of a written agreement signed by both parties indicating an intent to modify these Terms. Neither Buyer nor Seller may assign any of its rights or obligations hereunder or under any order; provided, however, that Seller shall be permitted to assign any of its rights or obligations under these Terms, Sales Agreement or any order in connection with the sale or transfer of all or substantially all of its business, whether by merger, reorganization, consolidation, transfer of assets, transfer of equity interests, or otherwise. If any provision of these Terms or a Sale Agreement is invalid, unenforceable or in conflict with any law, such provision shall be deemed severed from these Terms and/or the Sale Agreement and the validity of the remainder of these Terms and/or the Sale Agreement shall not be affected thereby. The provisions of these Terms that by their nature are reasonably intended by the parties to survive the expiration or termination of the Terms or any accepted order, including without limitation sections 4, 5, 11, 12, 13 and this section 14, shall survive the expiration or termination of the Terms or any accepted order.



# Part Number Index

Part Number	Page	Part Number	Page	Part Number	Page	Part Number	Page	Part Number	Page
FD2-AD10F	C-7	FD2-GDR07	C-13	FDH-SM116	C-8	FIC-CD100	C-5	FSP-D-1x4	C-12
FD2-APLMT	C-12	FD2-GDR09	C-13	FDH-SM132	C-8	FIC-CD10A	C-5	FSP-D-1x8	C-12
FD2-BD10F	C-7	FD2-GFR12	C-13	FDH-SMD14	C-8	FIC-G3P25	C-11	FSP-I-1x16	C-10
FD2-BPLMT	C-12	FD2-GFR16	C-13	FDH-SMD18	C-8	FIC-G4P25	C-11	FSP-I-1x2	C-10
FD2-CD10F	C-7	FDC-TD240	C-12	FDP-xy1A0 <sup>1</sup>	C-9	FIC-GCP25	C-11	FSP-I-1x32	C-10
FD2-CDF08	C-13	FDC-TD360	C-12	FI2-BD100	C-5	FIC-HA000	C-11	FSP-I-1x4	C-10
FD2-CDR07	C-13	FDC-TD720	C-12	FI2-CD100	C-5	FIC-PMBA1	C-11	FSP-I-1x8	C-10
FD2-CFR20	C-13	FDC-TE144	C-12	FI2-G1P25	C-11	FIC-PMBO1	C-11	SSM-2C000	C-3
FD2-CFR25	C-13	FDH-AA000	C-8	FI2-G4FP25	C-11	FIC-TD120	C-10		
FD2-CPLMT	C-12	FDH-BA000	C-8	FI2-G4RP25	C-11	FIC-TD240	C-10		
FD2-CTOOL	C-13	FDH-CA000	C-8	FIC-AD100	C-5	FSP-D-1x16	C-12		
FD2-DD10F	C-7	FDH-DA000	C-8	FIC-BD100	C-5	FSP-D-1x2	C-12		
FD2-GDF08	C-13	FDH-SCA72	C-9	FIC-BD10A	C-5	FSP-D-1x32	C-12		

**MADE  
IN THE USA**



Corporate Headquarters | Atlanta, GA



Product Development Center | Kennesaw, GA



Brownwood Communications Plant | Brownwood, TX



Hoisington Communications Plant | Hoisington, KS



6120 Powers Ferry Road, Suite 150  
Atlanta, Georgia 30339

P 770.657.6000  
T 800.551.8948  
F 877.291.7919

[SuperiorEssex.com](http://SuperiorEssex.com)